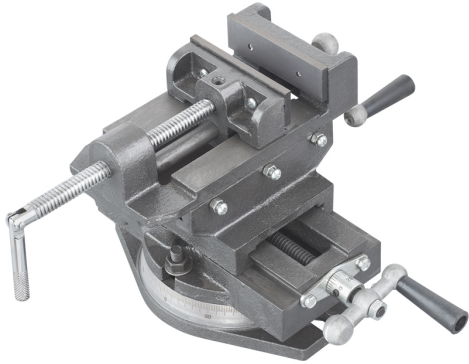


USEFUL FOR PERFORMING PRECISION DRILLING OR TAPPING OPERATIONS THANKS TO THE LONGITUDINAL AND LATERAL MOVEMENT WITHOUT REMOVING...



Jaws	125 X 40 mm
Opening	120 mm g
Base dimensions	230 x 175 mm
Height	180 mm
Longitudinal travel	150 mm
Cross travel	120 mm
Slot	20mm
Net weight	14,5 kg
Gross weight	15,21 kg
EAN Code	8012667345846



Cast Iron



Box