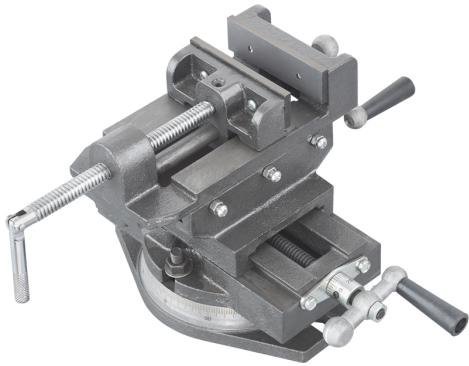


USEFUL FOR PERFORMING PRECISION DRILLING OR TAPPING OPERATIONS THANKS TO THE LONGITUDINAL AND LATERAL MOVEMENT WITHOUT REMOVING...



Jaws	150 X 45 mm
Opening	150 mm g
Base dimensions	235 x 195 mm
Height	190 mm
Longitudinal travel	170 mm
Cross travel	115 mm
Slot	20mm
Net weight	19,5 kg
Gross weight	20,08 kg
EAN Code	8012667345853



Cast Iron



Box