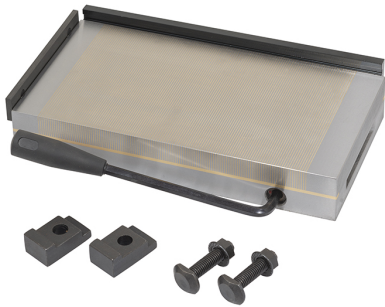


WITH FIXED POLARITY. IT ALLOWS THE MACHINING OF SMALL AND LOW THICKNESS PIECES DUE TO FINE PITCH.



Dimensions	500 x 200 x 58 mm
Magnetic force	120 N/cm ²
Pole pitch	0,5 + 1,5 mm
Net weight	57 Kg
Gross weight	44,50 kg
EAN Code	8012667386740



Wooden Box



Steel