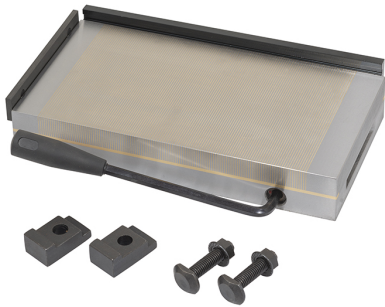


WITH FIXED POLARITY. IT ALLOWS THE MACHINING OF SMALL AND LOW THICKNESS PIECES DUE TO FINE PITCH.



Dimensions	400 x 150 x 51 mm
Magnetic force	120 N/cm ²
Pole pitch	0,5 + 1,5 mm
Net weight	24 Kg
Gross weight	26,00 kg
EAN Code	8012667386719



Wooden Box



Steel