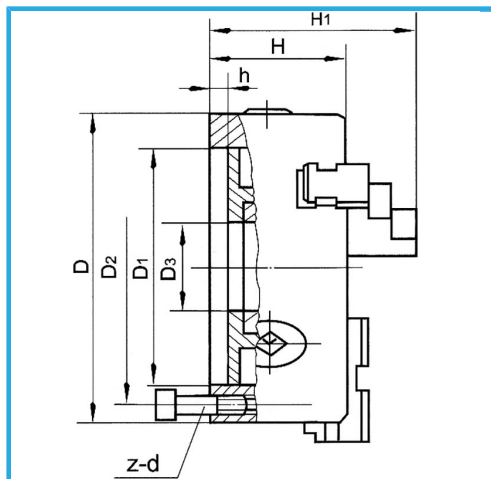


SINGLE GUIDE. INTEGRAL JAWS, CONCENTRIC CLAMPING, EQUIPPED WITH 1 SERIES CONSISTING OF 3 INTERNAL JAWS, 1 SERIES CONSISTING OF 3..



|                |               |
|----------------|---------------|
| D1             | 82,563 mm     |
| D2             | 104,8 mm      |
| D3             | 70 mm         |
| H1             | 139 mm        |
| H              | 95 mm         |
| h              | 15 mm         |
| z-d            | 6-M12 mm      |
| Spanner square | 12 mm         |
| A - A1         | 6 - 110 mm    |
| B - B1         | 80 - 250 mm   |
| C - C1         | 90 - 250 mm   |
| Net weight     | 32 kg         |
| Gross weight   | 1,86 kg       |
| EAN Code       | 8012667397883 |



Box



Wooden Box



Cast Iron