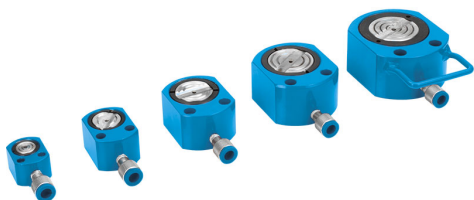




**€105,00**  
~~€133,00~~



<b>Portata max</b>	20 ton
<b>Pressione di esercizio</b>	63.7 Mpa
<b>Altezza min-max sollevabile</b>	52 - 63 mm
<b>Ø cilindro</b>	Ø 50 mm
<b>Corsa pistone</b>	11 mm
<b>Dimensioni</b>	76 x 138 mm
<b>Peso netto</b>	2,6 kg
<b>Peso lordo</b>	2,64 kg
<b>Codice EAN</b>	8012667253738