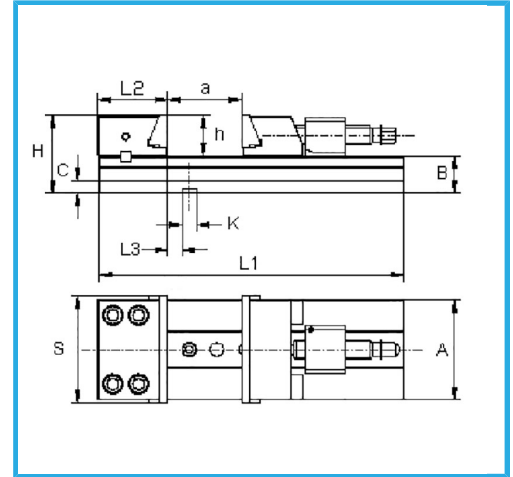
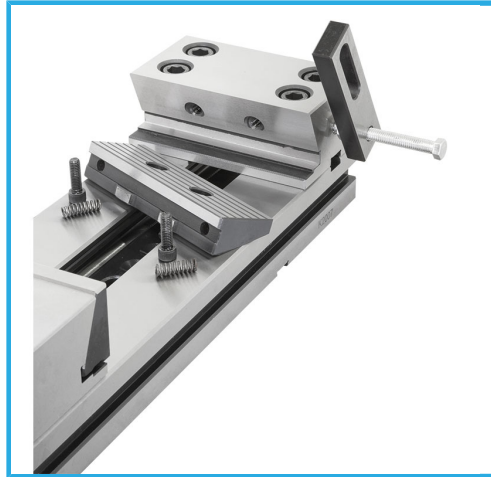
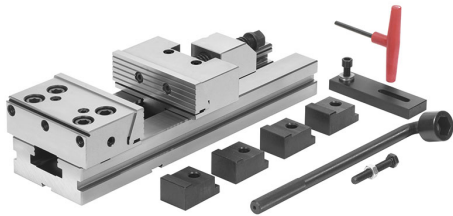


SUITABLE FOR JOBS WHERE PRECISION, RELIABILITY, AVAILABILITY AND SECURE LOCKING ARE REQUIRED. SUITABLE FOR PRECISION MILLING AND..



Jaw dimensions

| | |
|---------------------|---------------|
| S | 175 mm |
| A | 145 mm |
| B | 58 mm |
| C | 20 mm |
| H | 118 mm |
| L1 | 755 mm |
| L2 | 96.9 mm |
| L3 | 25,6 mm |
| h | 60 mm |
| K h7 | 16 mm |
| a | 500 mm |
| Net weight | 50 kg |
| Gross weight | 60,00 kg |
| EAN Code | 8012667253998 |



Wooden Box



Tempered



Grounded



Steel