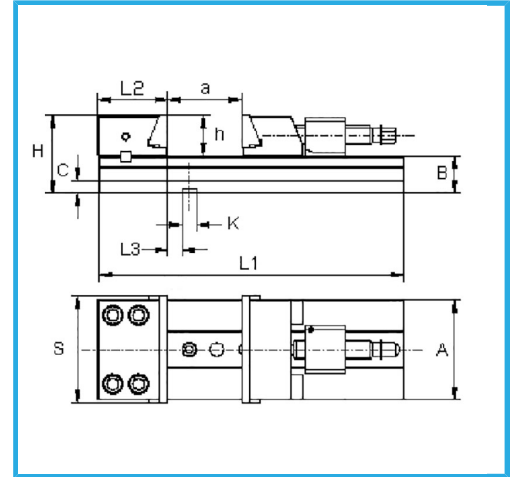
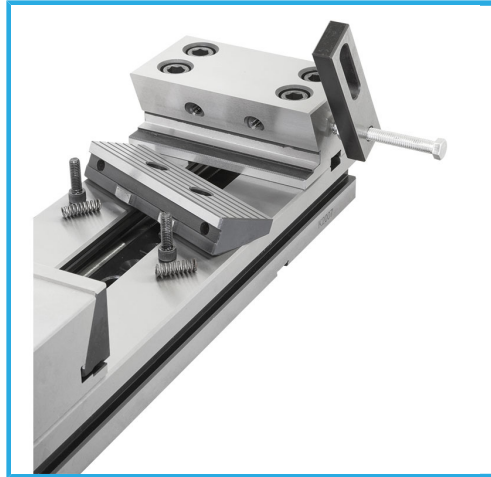
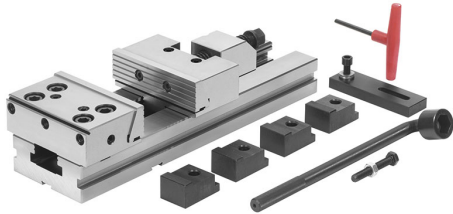


SUITABLE FOR JOBS WHERE PRECISION, RELIABILITY, AVAILABILITY AND SECURE LOCKING ARE REQUIRED. SUITABLE FOR PRECISION MILLING AND..



**Jaw dimensions**

S	200 mm
A	170 mm
B	70 mm
C	26 mm
H	135 mm
L1	895 mm
L2	113,4 mm
L3	25,6 mm
h	65 mm
K h7	16 mm
a	600 mm
<b>Net weight</b>	<b>84 kg</b>
<b>Gross weight</b>	<b>95,00 kg</b>
<b>EAN Code</b>	<b>8012667254025</b>



Wooden Box



Tempered



Grounded



Steel