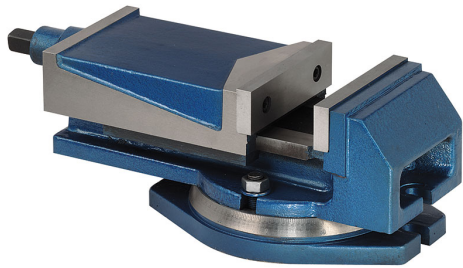


WITH INTERCHANGEABLE JAWS IN HARDENED AND GROUND STEEL.
SLIDING PARTS GROUND. FULLY COVERED SCREW. WITH CRANK.



Jaws	100 x 35 mm
Opening	80 mm g
Overall sizes	310 x 165 x 130h mm
Base dimensions	215 x 165 mm
Slot distance	195 mm
Slot	14 mm
Net weight	11 kg
Gross weight	13,50 kg
EAN Code	8012667003029



Box



Cast Iron