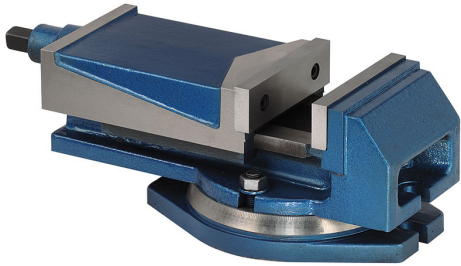


WITH INTERCHANGEABLE JAWS IN HARDENED AND GROUND STEEL.  
SLIDING PARTS GROUND. FULLY COVERED SCREW. WITH CRANK.



<b>Jaws</b>	160 x 50 mm
<b>Opening</b>	125 mm g
<b>Overall sizes</b>	422 x 235 x 162h mm
<b>Base dimensions</b>	300 x 235 mm
<b>Slot distance</b>	275 mm
<b>Slot</b>	18 mm
<b>Net weight</b>	30 kg
<b>Gross weight</b>	32,80 kg
<b>EAN Code</b>	8012667003043



Box



Cast Iron