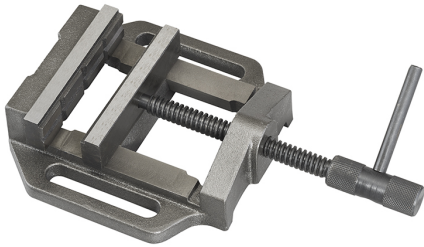


EQUIPPED WITH A PRISMATIC JAW AND A SMOOTH JAW.



<b>Jaws</b>	125 x 30 mm
<b>Opening</b>	100 mm g
<b>Base dimensions</b>	182 x 182 mm
<b>Net weight</b>	4 kg
<b>Gross weight</b>	4,47 kg
<b>EAN Code</b>	8012667002145



Box



Cast Iron