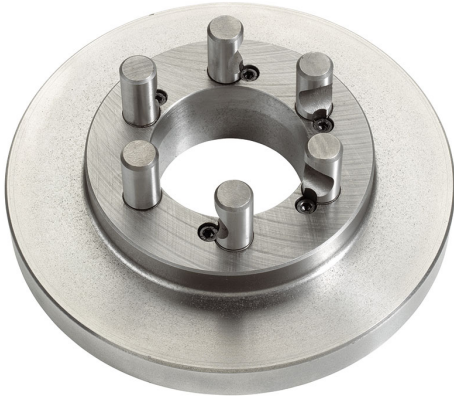


CAMLOCK DIN 55029 TO SHORT CONE WITH RAW SPINDLE SIDE.



| | |
|----------------------|---------------|
| Cam lock Type | 6" |
| Size | Ø 250 mm |
| Thickness | 30 mm |
| Pins | Ø 22 mm |
| Gross weight | 11,04 kg |
| EAN Code | 8012667238919 |



Box



Cast Iron



Wooden Box