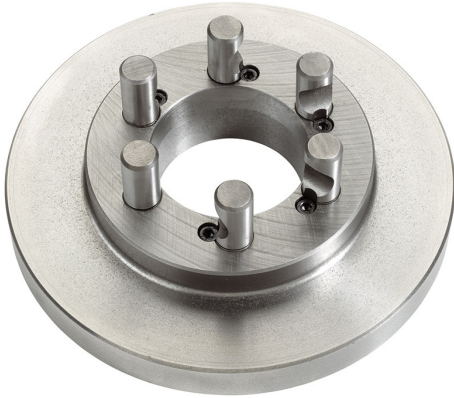


CAMLOCK DIN 55029 TO SHORT CONE WITH RAW SPINDLE SIDE.



| | |
|----------------------|---------------|
| Cam lock Type | 8" |
| Size | Ø 500 mm |
| Thickness | 36 mm |
| Pins | Ø 25,4 mm |
| Gross weight | 52,00 kg |
| EAN Code | 8012667238940 |



Box



Cast Iron



Wooden Box