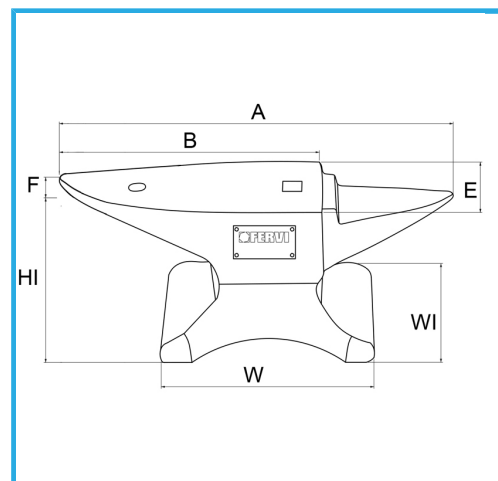
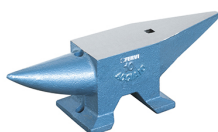


STABILE KONSTRUKTION, RUNDLOCH UND VIERKANTLOCH ZUM
STANZEN UND BIEGEN.



A	345 mm
B	235 mm
E	80 mm
W	150 mm
WI	100 mm
HI	120 mm
Toleranz	±5%
Nettogewicht	10 kg
Bruttogewicht	10,00 kg
EAN-Code	8012667185169



Box

C50