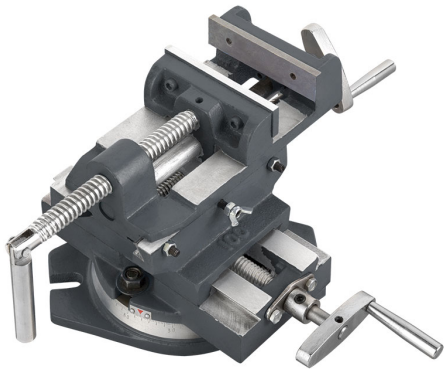


USEFUL FOR PERFORMING PRECISION DRILLING OR TAPPING OPERATIONS THANKS TO THE LONGITUDINAL AND LATERAL MOVEMENT WITHOUT REMOVING...



Jaws	100 X 25 mm
Opening	90 mm g
Base dimensions	210 x 150 mm
Height	175 mm
Longitudinal travel	130 mm
Cross travel	110 mm
Slot	18mm
Net weight	11,5 kg
Gross weight	11,99 kg
EAN Code	8012667289423



Cast Iron



Box